

Steeple Claydon Neighbourhood Plan

Consultation Event – 17th November 2016

Neighbourhood Plans

- Planning legislation
- Planning authority (AVDC) responsible for the Local Plan
- This includes providing a 5 year land supply to meet housing demand
- Parish and Town Councils have the option to develop a Neighbourhood Plan

What is a Neighbourhood Plan?

- It's whatever we want it to be – it's our plan
- It is our opportunity to say what we want the village to be like in the future
- In particular it examines what development the village considers appropriate
- There are certain things it needs to contain
- It has to be carried out in consultation with the residents
- It has to be carried out in line with the published process

Steeple Claydon plan

- Parish Council agreed need for a Neighbourhood Plan
- Process began over 18 months ago
- Understanding the background
- Reading the guidance
- Identifying and employing consultants

Steeple Claydon's needs

- Need a plan in place urgently to ensure we have protection against unwanted development
- We want to use it to inform the Parish Council's decision making and investment programme
- We need the evidence to support future community facilities where we can obtain grant funding or Section 106 / CIL

Our team

- The Neighbourhood Plan team – the steering committee
- Consultants
- Supporters and helpers

Baseline review

- Analysis of what we thought was important:
 - Education
 - Housing
 - Business
 - Environment
 - Health
 - Recreation
 - Traffic and transport
 - History

Initial consultation

- Public meeting and exhibition – August 2015



Our objective

To develop a plan which supports the future sustainability of our village

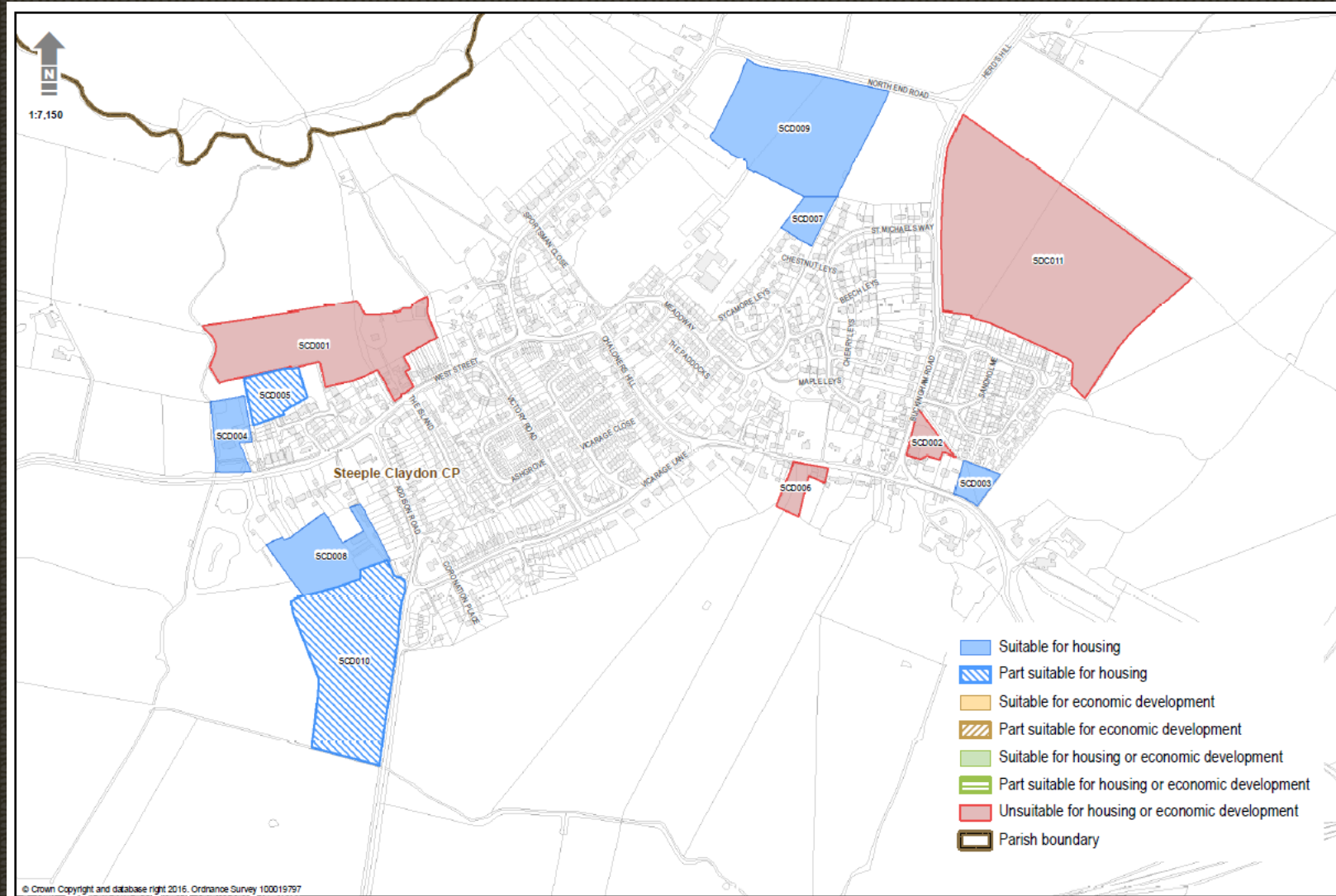
AVDC's position

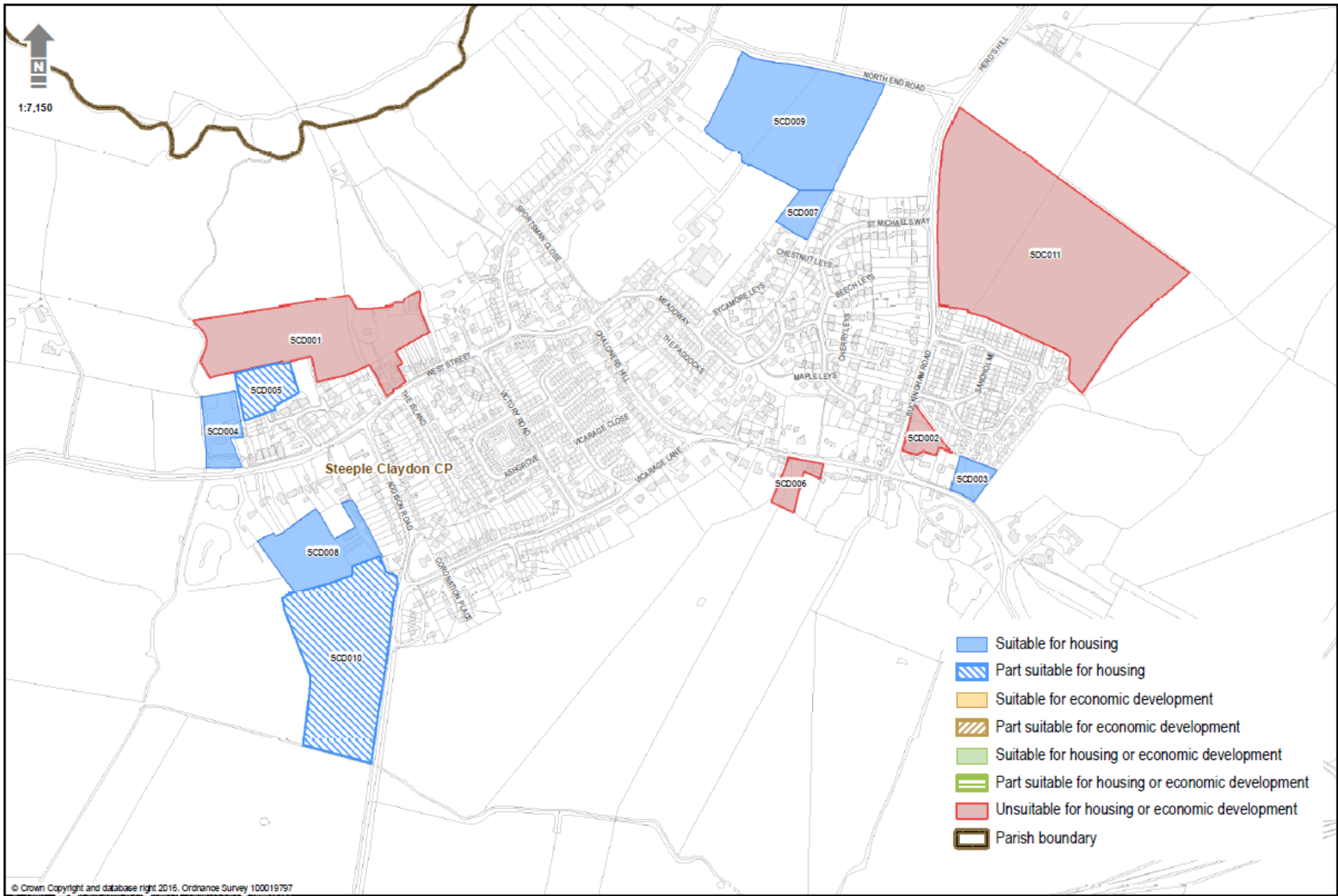
- Failed to develop a Local Plan at the first attempt
- Working towards a Local Plan – expected mid 2017
- AVDC advised us to hold off
- Decided to progress – taking account of draft Local Plans
- AVDC didn't support other 'made' plans
- Test case went to appeal – AVDC decision overturned

Housing Allocation - SHLAA

- Strategic Housing Land Availability Assessment
- SHLAA first draft – 150 houses
- SHLAA second draft – 156 houses
- Local Plan latest draft – 208 houses
- Those built since 2013 count in these totals
- AVDC's numbers are falling 33k down to 27k

Housing allocation





Process

- Consultation – what do you think?
- Combine into a questionnaire – issued to all houses in the parish
- Analyse and use consultation and feedback to develop draft report
- Consultation – have we understood you?
- Develop final report and handover to AVDC

Programme

- Official start of the process – April 2015
- Consultation including Questionnaire – current
- Draft plan – end January
- Consultation – February 2017
- Final plan – April 2017

How can you help?

- Look at what we're doing and comment
- Take an active part in the consultation process
- Complete the questionnaire and encourage others to

Some thoughts

- What's good about Steeple Claydon ?



Some thoughts

- What's good about Steeple Claydon ?



Some thoughts

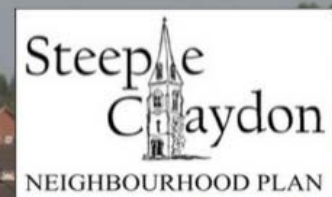
- What's good about Steeple Claydon ?



We are here for you

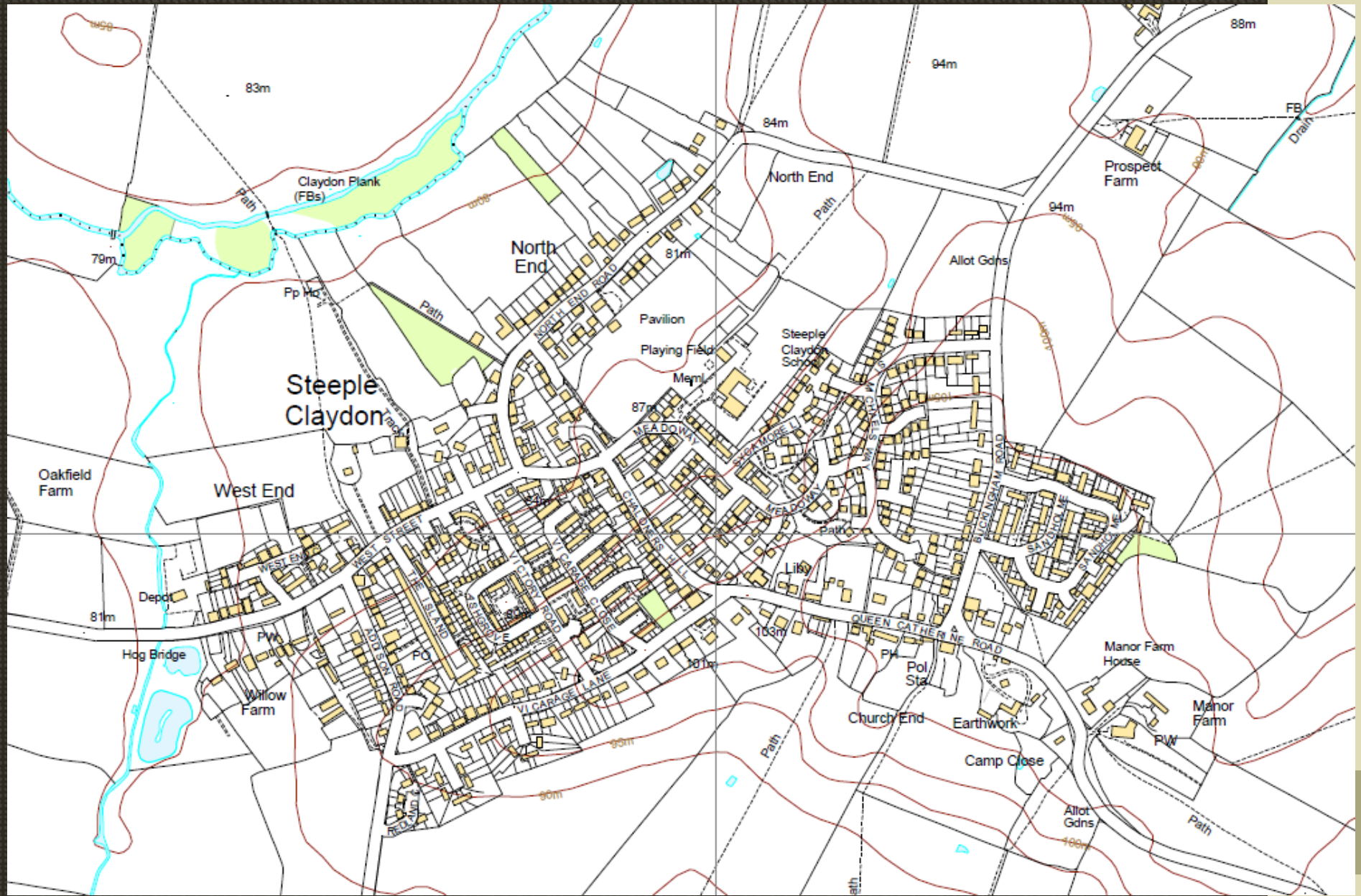
- We are committed to developing this plan to
 - Celebrate what makes Steeple Claydon special
 - Make sure it's a great place for future generations to live
 - An enjoyable place to be

PLEASE HELP!



Steeple Claydon Neighbourhood Plan

Consultation Event – 17th November 2016





60 houses approved

A - North End Road
B, C, D - Buckingham Road
E, F - Molly's Field/Piece

m 100 200